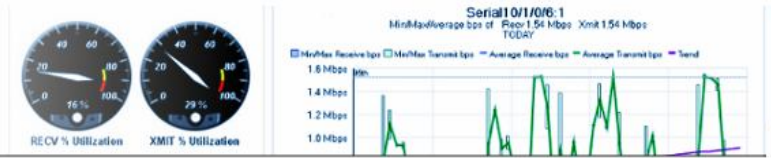


Network monitoring



When your business relies on high speed Internet connections, you can't afford bandwidth bottlenecks or unauthorized intrusions which can drastically decrease network performance. Our "at a glance" network monitoring provides the peace of mind that only comes from complete awareness of network status.

- Monitor routers, servers, switches, firewalls - any SNMP enabled device
- View bandwidth and traffic statistics at any time
- Verify server uptime and application performance, as well as CPU/memory usage

Network Overview

Nodes: Interfaces:

The property selected will display as a colored icon for each node and interface.

Hold your mouse over each Node or Interface icon for details.

Nodes

- T1 Edge Router 258.694.165.12
- Email server 258.694.165.19
- Edge Firewall 258.694.165.13
- Switch 1 258.694.165.14
-
- ns1.xycompany.com 258.694.165.15
-
- FL office T1 router 258.694.165.198
- FL office firewall 258.694.165.199
- FL office FTP server 258.694.165.201
- CT office T1 router 258.694.165.102
- CT office firewall 258.694.165.103
- CT office SQL server 258.694.165.104
- RI office DSL router 258.694.165.222
- RI office firewall 258.694.165.223
- RI office VoIP PBX 258.694.165.12
- NY office T1 router 258.694.165.154
- NY office firewall 258.694.165.155
- NY office switch 258.694.165.156
- NY office web server 258.694.165.157
- NY office SQL server 258.694.165.158
- PA office T1 router 258.694.165.230
- PA office firewall 258.694.165.231
- PA office switch 258.694.165.232

Interfaces

Interface

Serial10/1/0/25:1 - To Customer XYZ Company

Oper. Status: Up

Admin. Status: Up

Interface Type: Frame Relay

Transmit

Current Traffic: 358.58 Kbps

Percent utilization: 23 %

Receive

Current Traffic: 43.6 Kbps

Percent utilization: 2 %

Network Overview - see all nodes in your network at one glance!

Instant glance into your network

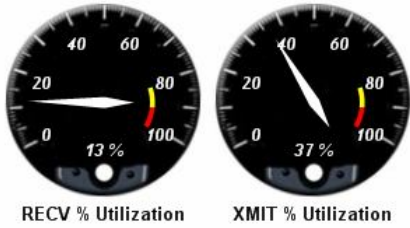
MegaNet's network monitoring service can help you quickly identify, diagnose, and repair network issues and problems so you can concentrate on conducting business in a secure manner.

Monitor any device, in any location, anywhere in the world.

Maintaining a real-time overview of your network (and key devices) can provide a priceless level of business intelligence. It allows you to react quickly to network events and more importantly, it allows you to instantly anticipate how these events could impact your business process. It's not uncommon for a network to span different timezones, an undetected off-hours event could now represent costly consequences for workforces in multiple countries. You can effectively minimize these kinds of events with the simplest of monitoring strategies.

Interface Details - Serial5/1/0/9:1 · To Customer

Percent Utilization - Radial Gauges



Interface Details

Status	Up	
Name	Serial5/1/0/9:1 - To Customer	
Alias	To Customer	
Index	118	
Interface Type	PPP	
MAC Address	0000.0000.0000	
Administrative Status	Up	
Operational Status	Up	
Last Status Change	5/11/2010 03:04 PM	

	Receive	Transmit
Interface Bandwidth	1.54 Mbps	1.54 Mbps
Current Traffic	210.31 Kbps	574.69 Kbps
Percent Utilization	13 %	37 %
Packets per Second	113.0 pps	110.0 pps
Average Packet Size	230 bytes	648 bytes

MTU	1.5 Kbytes
Configured Interface Speed	1.54 Mbps
Counter 64 Support	No

List of Interface Charts

Today
Average bps
Min/Max Average bps

Min/Max/Average bps In/Out

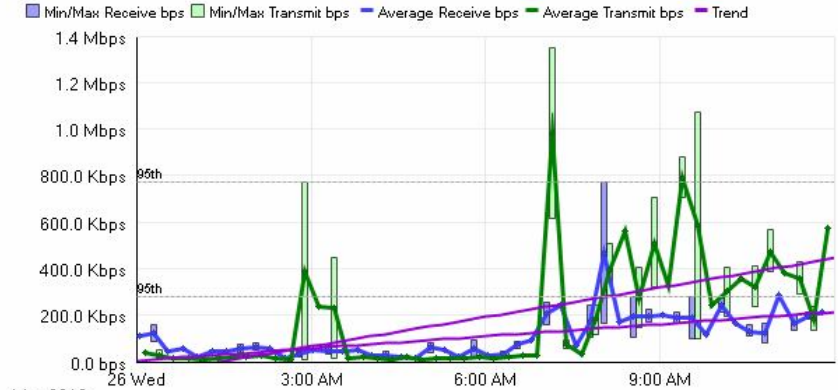
TODAY

View Options

EDIT HELP

Serial5/1/0/9:1 - To Customer

Min/Max/Average bps of Recv 1.54 Mbps Xmit 1.54 Mbps
TODAY



95th Percentile: Average Receive bps is 278.356 Kbps, Average Transmit bps is 771.7511 Kbps
SolarWinds Orion Core Services 2010.1

Percent Utilization - Line Chart

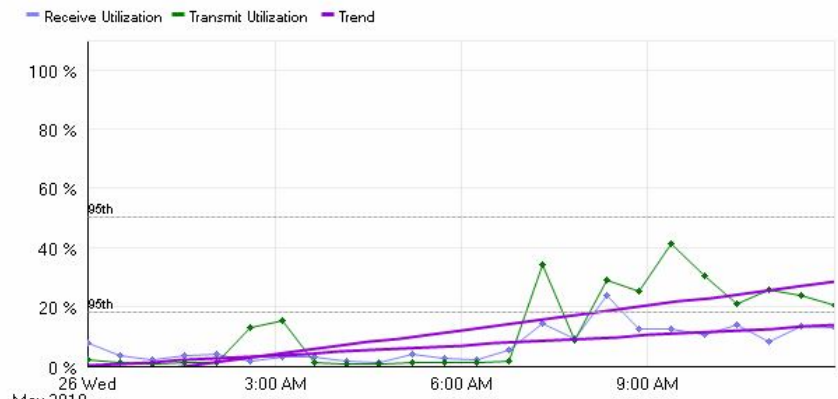
TODAY

View Options

EDIT HELP

Serial5/1/0/9:1 - To Customer

Percent Utilization of Recv 1.54 Mbps Xmit 1.54 Mbps
TODAY



View in and out bandwidth, total utilization, packet statistics, and more

Keep your applications and services up and running

Our new **network monitor service** is comprised of three individual components, which can be added individually or all together as a comprehensive package:

- **Standard Monitor**

The core component of our monitoring package provides a top-level view of your network and attached devices. Available metrics include bandwidth, packet performance, up/down status. Additionally, tracked metrics for servers include CPU, memory allocation, and available storage.

- **Netflow**

Netflow provides you with a statistical breakdown of your network's traffic - view data destinations, protocols, and application traffic on your network. MegaNet's Netflow package can help you keep an eye on your traffic usage to boost both network performance, and employee productivity.

- **Application Monitor**

Application level monitoring provides immediate user-defined performance alerts for individual service processes or entire application platforms, such as IIS, Exchange, and MySQL. This type of custom defined alerting can be combined with optional monitoring of Windows events or standard syslog to keep sysadmins well informed of potential issues so they have maximum time to prevent any service disruptions.

The screenshot displays a comprehensive monitoring interface for a 'Webmail Monitor' application. It is divided into several sections:

- Application Details:** Shows the application name, status (Application status is Up), and server status (Server status is Up). It includes a table of components:

COMPONENT NAME	COMPONENT TYPE	COMPONENT STATUS
HTTP Monitor	HTTP Monitor	Up
SOAP Monitor	SOAP Monitor	Up
POP3 Monitor	POP3 Monitor	Up
SMTP Monitor	SMTP Monitor	Up
- Components:** A table listing component names, ports, statistic data (all 'N/A'), and response times (5 ms, 2 ms, 1 ms, 1 ms).

COMPONENT NAME	PORT	STATISTIC DATA	RESPONSE TIME
HTTP Monitor	80	N/A	5 ms
SOAP Monitor	43	N/A	2 ms
POP3 Monitor	110	N/A	1 ms
SMTP Monitor	25	N/A	1 ms
- Application Availability:** A bar chart titled 'Webmail Monitor Application Availability TODAY (Every 30 Minutes)'. The y-axis represents 'Availability' from 0% to 100%. The x-axis shows time slots from 12:00 AM to 11:30 PM. All bars are at 100% availability. Below the chart, it notes 'Time Zone: Eastern Daylight Time (UTC-4)' and 'On- & Application Performance Monitor 3.1'.

Time Slot	Availability
12:00 AM	100%
12:30 AM	100%
1:00 AM	100%
1:30 AM	100%
2:00 AM	100%
2:30 AM	100%
3:00 AM	100%
3:30 AM	100%
4:00 AM	100%
4:30 AM	100%
5:00 AM	100%
5:30 AM	100%
6:00 AM	100%
6:30 AM	100%
7:00 AM	100%
7:30 AM	100%
8:00 AM	100%
8:30 AM	100%
9:00 AM	100%
9:30 AM	100%
10:00 AM	100%
10:30 AM	100%
11:00 AM	100%
11:30 AM	100%
12:00 PM	100%
12:30 PM	100%
1:00 PM	100%
1:30 PM	100%
2:00 PM	100%
2:30 PM	100%
3:00 PM	100%
3:30 PM	100%
4:00 PM	100%
4:30 PM	100%
5:00 PM	100%
5:30 PM	100%
6:00 PM	100%
6:30 PM	100%
7:00 PM	100%
7:30 PM	100%
8:00 PM	100%
8:30 PM	100%
9:00 PM	100%
9:30 PM	100%
10:00 PM	100%
10:30 PM	100%
11:00 PM	100%
11:30 PM	100%
- Node Details:** Shows node status (Up), IP address, dynamic IP (No), machine type (Unknown), DNS (mail.meganet.net), system name, description, location, contact, last boot, operating system, IOS image (Unknown), hardware (Physical), telnet, and web browser (http://www.10.10.10.10).
- Traffic & Percent Utilization of each Interface:** A section for monitoring network interface usage.
- Availability Statistics:** A table for tracking application availability over time.
- CPU Load & Memory Statistics:** Shows current CPU load (0%), memory used (0%), memory available (0%), and total memory (0%).

Effectively manage and monitor server application status, CPU, and memory usage

For more information on how to centralize your network monitoring and management, please contact us today!

Carrier class network management - MegaNet's Orion Network Monitoring Service



315 Pleasant Street
 Fall River, MA 02721
 877-MEGANET
 www.meganet.net